

A man with tattoos and curly hair is inside a small, modern sauna with a black exterior and a large glass window. The sauna is situated in a dense forest of tall, thin trees. The interior of the sauna is made of light-colored wood and is illuminated by a warm, orange glow. The man is standing on a wooden bench, holding a wooden bucket and a ladle, ready to pour water. The text "SIP SAUNAS" is overlaid in the bottom left corner in a stylized, orange font.

SIP
SAUNAS

About Sip Saunas

We are more than just designers and builders of saunas – we are enthusiasts.

Our team shares a deep passion for the craft, culture, and experience of sauna. Every unit is handcrafted in Bloomfield, Ontario, where we bring a meticulous, Scandinavian-inspired approach to our design and construction. We work exclusively with local, sustainable materials – white pine and white cedar sourced just miles from our workshop – ensuring each sauna feels as rooted in its surroundings as it does in tradition.

Our ethos is shaped by years of immersion in saunas, spas, and bathhouses around the world. That global perspective inspires designs that balance comfort, function, and enduring beauty. Each sauna is a reflection of our shared passion and our uncompromising commitment to authentic sauna culture.

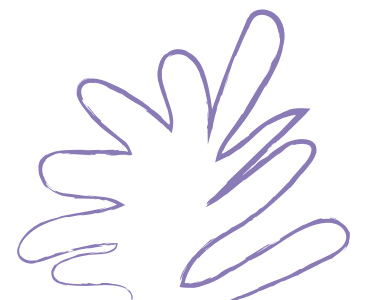


Table of Contents

01 Questions You May Have

03 Electric Saunas

04 Wood Fired Saunas

06 Customizations, Design & Consulting

07 Warranty



A photograph of a light-colored wooden door with vertical planks and a matching wooden handle. The door is slightly ajar, revealing a blurred outdoor scene with green grass and a wooden chair in the background. An orange rectangular box is overlaid on the left side of the door, containing the text "Questions You May Have".

Questions You May Have

We insulate using sauna grade insulation and vapour barrier - faster heat up times and legendary heat and steam retention.

All Saunas come black, but can be stained to your liking or matched to an existing building upon request. We also offer the option of shou sugi ban torched siding.



The foundation for your sauna is flexible. It can be a gravel pad, patio stones, helical piles, a poured slab or deck blocks. We have had clients rest their sauna right on the forest floor. You can find the dimensions of our saunas' footprint in this catalogue.

We use a corrugated steel roof/ flashing assembly with a water-proof membrane underneath - the most weatherproof roof possible.

Our door heights are lower than normal "creating a hot pocket" - ensuring heat and steam stay inside the sauna as you enter and exit.

Wood fired saunas do not require any power. Log length is 14".

We have studied the best ventilation techniques - and vent our wood fired saunas differently than our electric ones.

We don't use any toxic wood glues or finishes inside our saunas - resulting in a pure, chemical-free experience.

The sauna door can be on either side of the sauna.

We do not use thermal pane windows in our saunas - as the seals can be prone to failing with the intense temperature fluctuations. We use 8mm heat treated tempered glass that is extremely durable and safe. Our heaters are sized accordingly.

Our saunas come to your home fully built or flat packed for on site assembly by the Sip team. We move your sauna into place using a shed trailer, forklift or crane.

Other FAQ's can be found on our website.





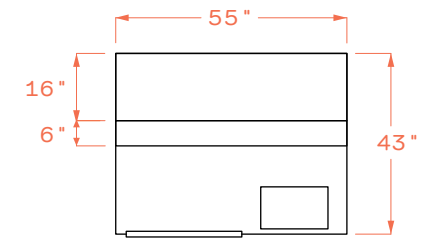
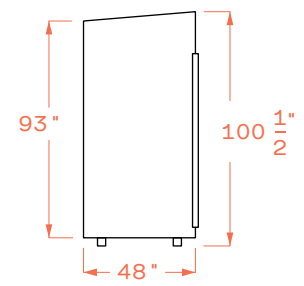
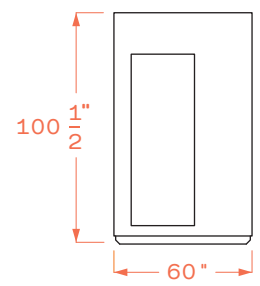
Front

Side

Floor Plan

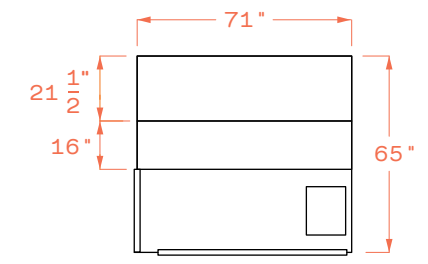
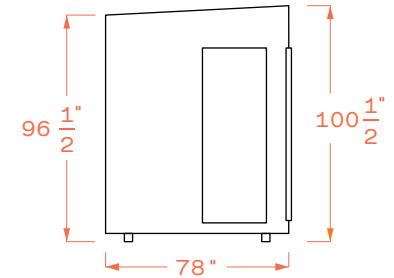
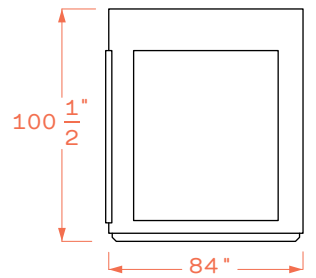
SM 56

1-2 Person
30 Amp
Harvia KIP 60



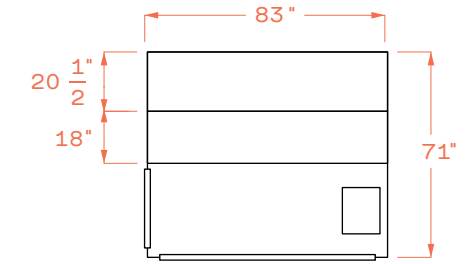
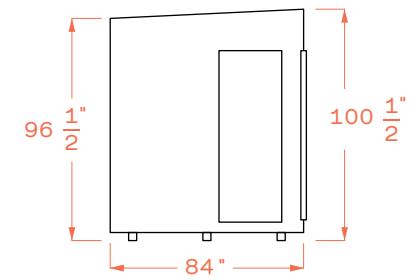
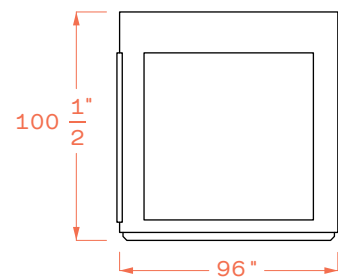
SM 76

3-4 Person
40 Amp
Harvia Virta 9



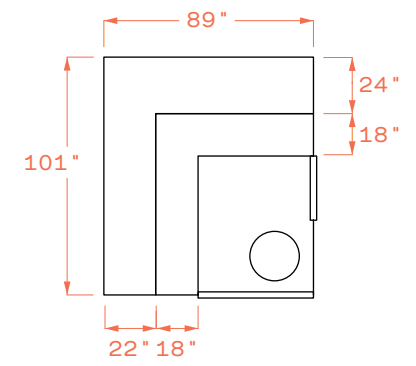
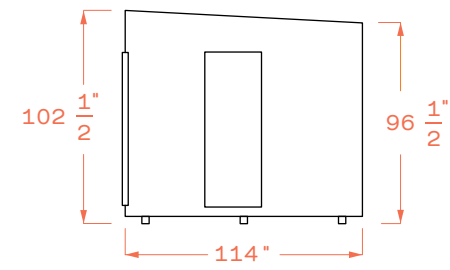
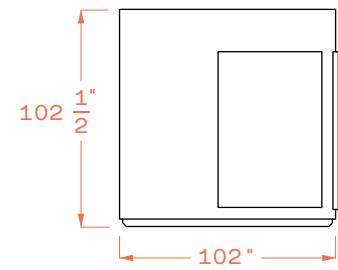
SM 87

4-5 Person
40 Amp
Harvia Virta 9



SM 98

8 Person
50 Amp
Harvia Legend Pro 12



⚡📶 Saunas are 240 volts and require a licensed electrician for connection. All saunas can be controlled via wifi right from your phone.



Front

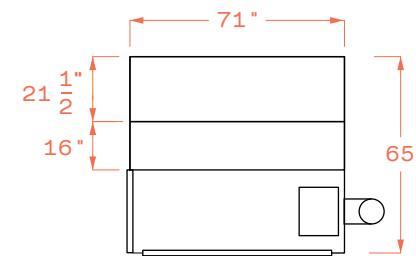
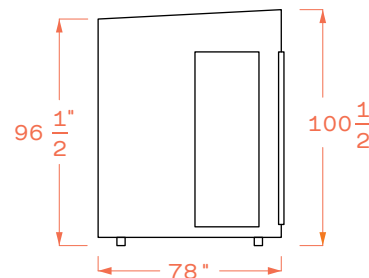
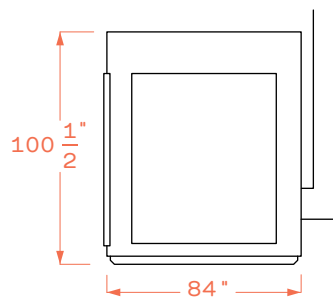
Side

Floor Plan

SM 76

3-4 Person

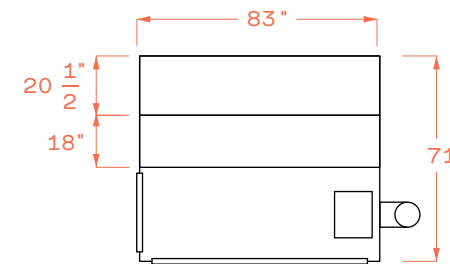
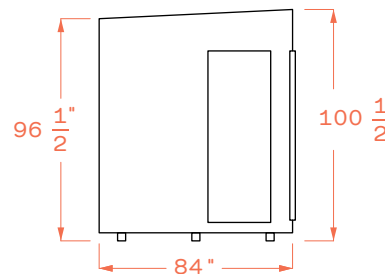
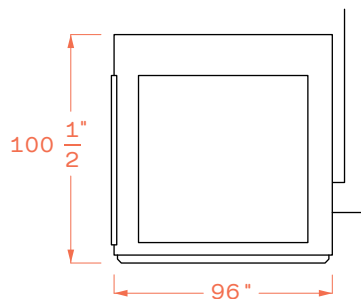
Harvia Linear 16



SM 87

4-5 Person

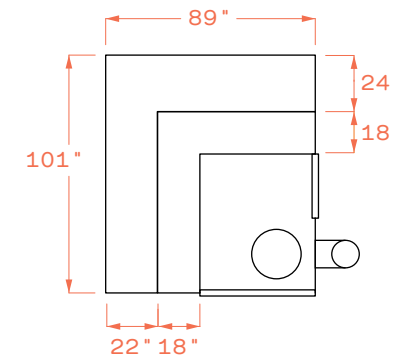
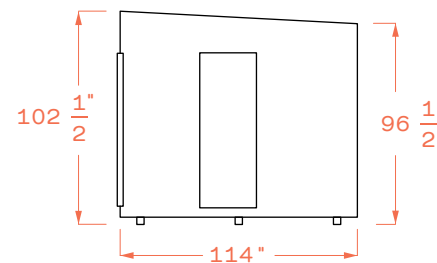
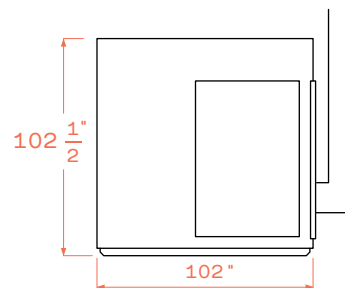
Harvia Linear 16



SM 98

8 Person

Harvia Linear 22





SM 87



SM 98



SM 54

SM 76





Customizations, Design & Consulting

Every client's sauna journey is unique.

Whether adapting one of our standard models or creating something entirely new, we can modify layouts, colour, dimensions, windows, or integrate features like porches, showers, or awnings

We remain committed to using Ontario-grown woods such as pine, cedar, aspen, and alder. Clients are welcome to specify their preferred combinations within this palette.

To discuss customizations or consulting needs, we invite you to reach out to us directly at info@sipsaunas.ca.



Warranty

A Sip Sauna is a generational purchase – handcrafted to last a lifetime. Each sauna is backed by our Craftsman’s Warranty, which protects against damage or fabrication errors beyond the natural and expected movement of the wood.

All Harvia heaters are covered by a manufacturer’s warranty, providing further peace of mind with your investment.







SIP
SAUNAS

OPEN